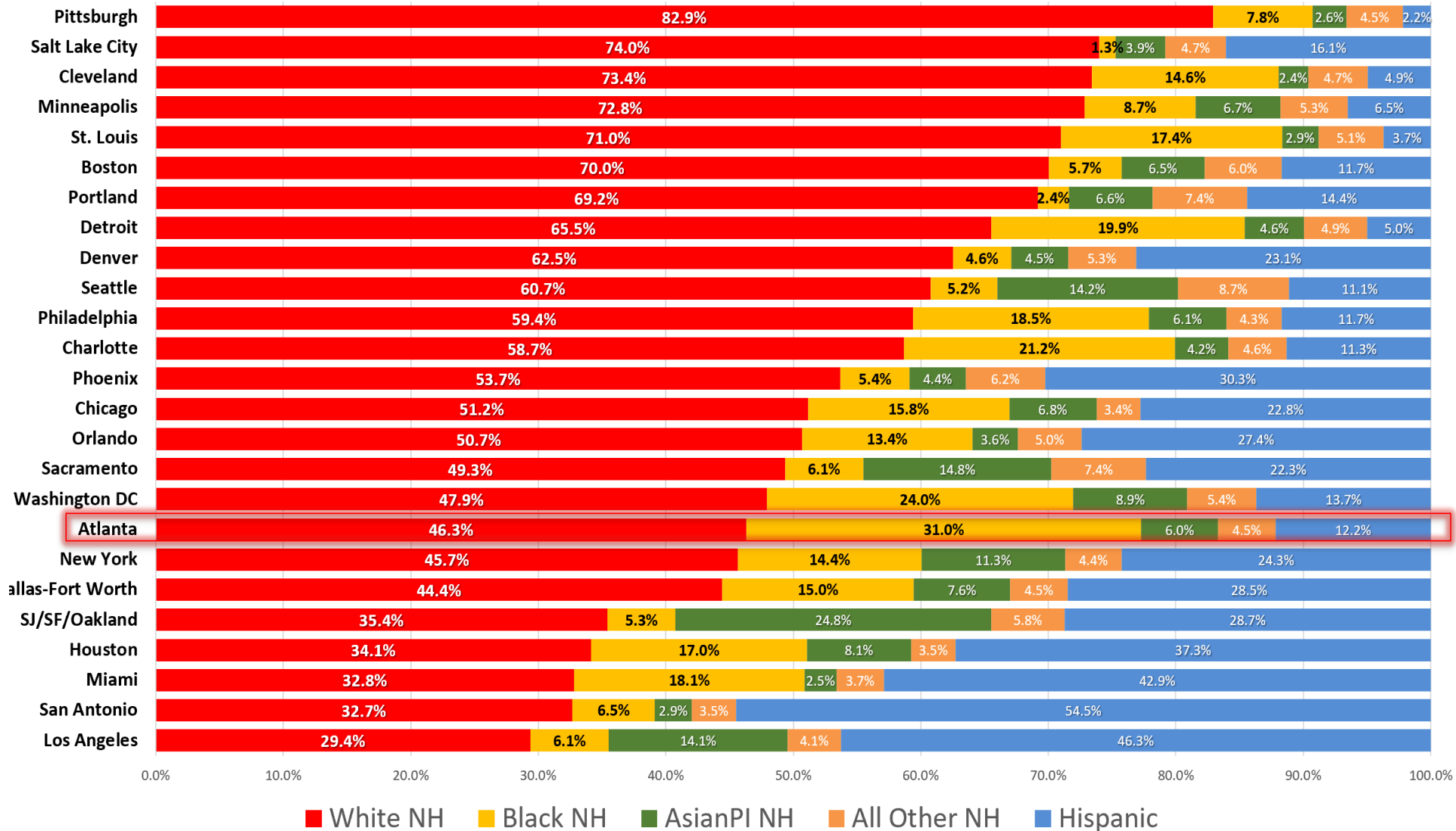
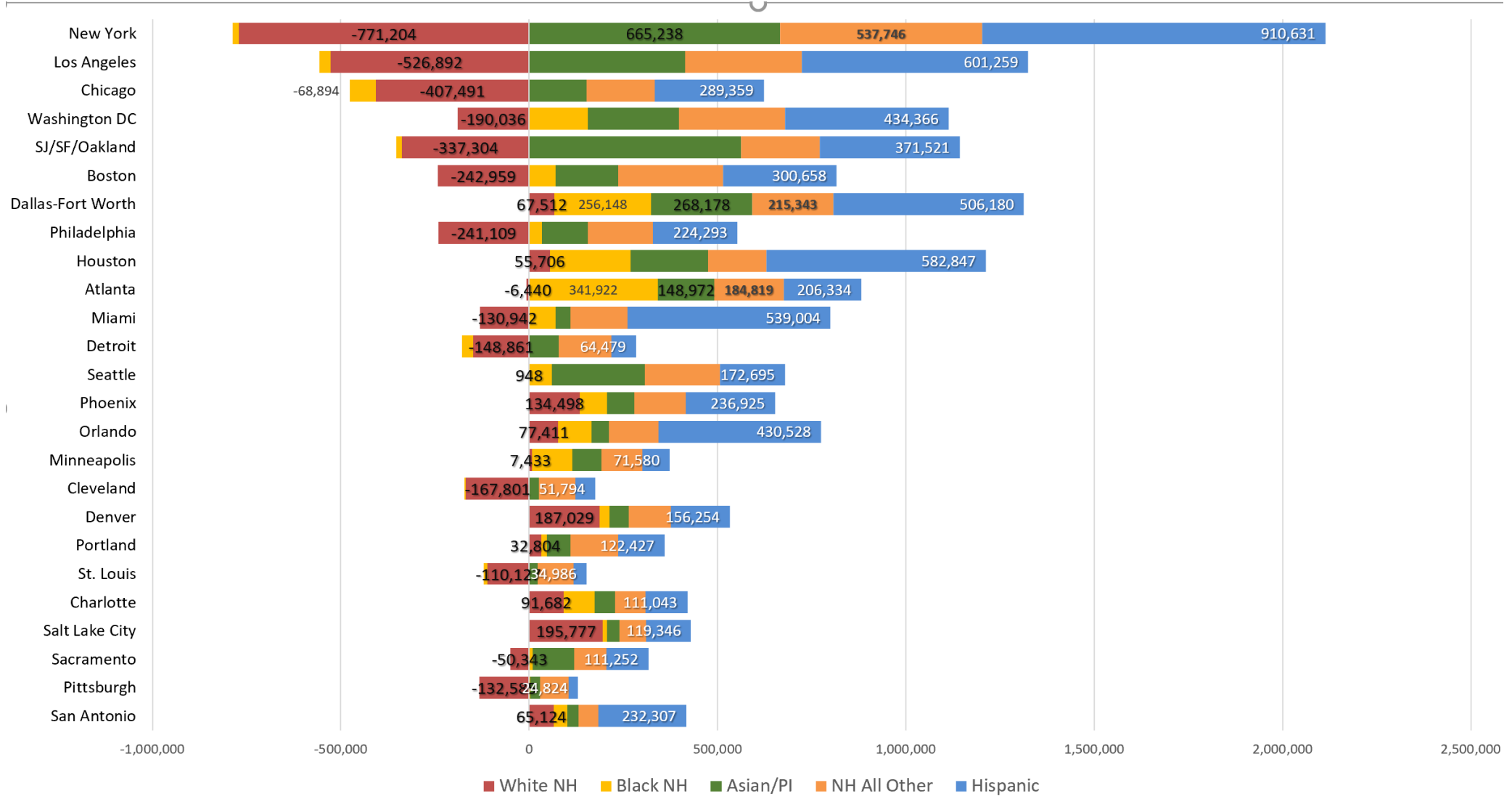


## 25 Largest Combined Statistical Area (CSA) Shares of Race/ Ethnicity: 2020 Census



Hispanic/Latinx share of the Atlanta CSA's population is at 12.2% for the 2020 Census, surging from just over 6 percent at the time of the 2000 Census. However, this share is the 10<sup>th</sup> lowest when ranked against the comparable shares in the other 24 largest combined statistical areas (based on 2020 Census populations). Note: The Atlanta CSA is larger than the 29-county MSA and includes the Gainesville and Cartersville areas.

# Change in Population by Race/ Ethnicity 25 Largest CSAs: 2020 Census



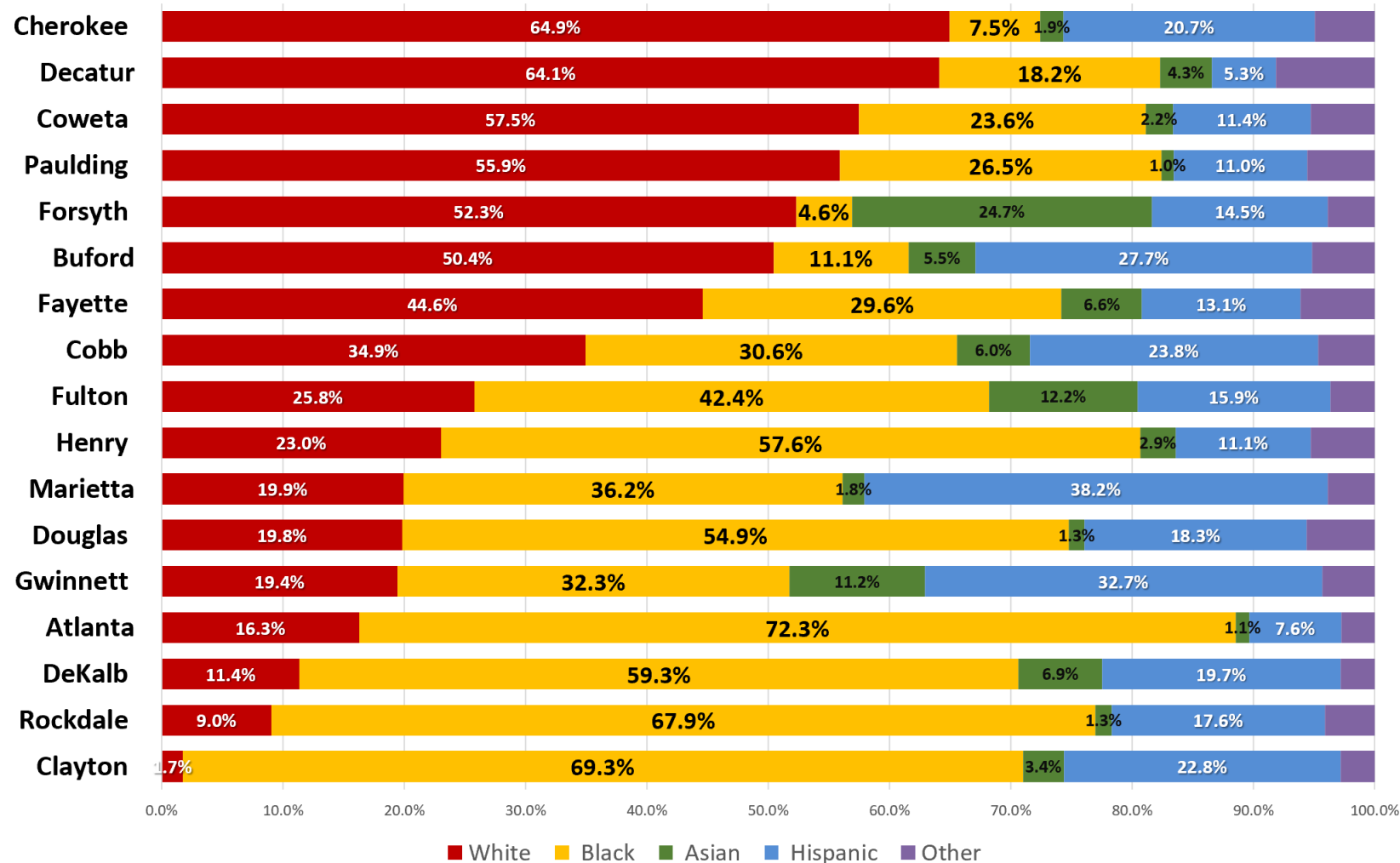
Hispanic/Latinx population increased in each of the 25 largest CSAs 2010-2020, while White Non-Hispanic population declined in eight of the CSAs. Hispanic increase led race/ ethnicity categories in net increase in 14 of the 25 CSAs. In Atlanta, the Black population grew substantially faster, and Asian and multiracial growth approached absolute increase for Hispanic/Latinx.

## 2020 Census Race/Ethnicity Totals: State of Georgia and Subareas

	Total Population	Non- Hispanic	White, Non- Hispanic	Black, Non- Hispanic	Asian, Non- Hispanic	Non- Hispanic Other*	Hispanic/ Latino	Pct Share Total
State of GA	10,711,908	9,588,451	5,362,156	3,278,119	475,680	472,496	1,123,457	10.5%
Atlanta MSA 1/	6,089,815	5,359,345	2,661,835	2,019,208	397,009	281,293	730,470	12.0%
21 County Area 2/	6,100,283	5,318,248	2,633,090	2,004,034	400,274	280,850	782,035	12.8%
11 County ARC 3/	4,967,514	4,314,666	1,912,447	1,791,664	381,987	228,568	652,848	13.1%
Core 5 Counties 4/	3,851,898	3,309,879	1,326,355	1,495,738	313,258	174,528	542,019	14.1%
State less 11 County	5,744,394	5,273,785	3,449,709	1,486,455	93,693	243,928	470,609	8.2%
ARC Counties:								
Cherokee County	266,620	234,509	197,867	17,326	5,429	13,887	32,111	12.0%
Clayton County	297,595	255,049	25,902	205,301	13,491	10,355	42,546	14.3%
Cobb County	766,149	654,909	369,182	200,072	42,533	43,122	111,240	14.5%
DeKalb County	764,382	682,911	215,895	384,438	50,076	32,502	81,471	10.7%
Douglas County	144,237	128,202	49,877	68,763	2,313	7,249	16,035	11.1%
Fayette County	119,194	109,714	68,144	29,166	6,362	6,042	9,480	8.0%
Forsyth County	251,283	226,057	159,407	10,455	45,117	11,078	25,226	10.0%
Fulton County	1,066,710	980,408	404,793	448,803	80,632	46,180	86,302	8.1%
Gwinnett County	957,062	736,602	310,583	257,124	126,526	42,369	220,460	23.0%
Henry County	240,712	222,275	86,297	116,431	7,976	11,571	18,437	7.7%
Rockdale County	93,570	84,030	24,500	53,785	1,532	4,213	9,540	10.2%
City of Atlanta	498,715	468,727	192,148	233,018	22,442	21,119	29,988	6.0%
1/ 29-County Area								
2/ARC Forecast Area, including 11 ARC Counties plus Barrow, Bartow, Carroll, Coweta,								
3/ As listed below								
4/ Clayton, Cobb, DeKalb, Fulton, Gwinnett								
Source: US Census 2020, Processed by ARC Research & Analytics/ Neighborhood Nexus								

Hispanic/Latinx concentration as of the 2020 Census is significantly higher in the Atlanta MSA (at 12% of total population) than in the rest of the state of Georgia (at 8.2%). Hispanic/Latinx share of the five core counties was highest among the “larger than county” aggregations, at 14%. At the county level, nearly 1 in 4 Gwinnett residents reported as Hispanic/Latinx. The City of Atlanta (at 6%) and Henry County (at 7.7%) have the lowest Hispanic shares among ARC jurisdictions.

## 2020 Public School Enrollment by District: 13-County Atlanta Area



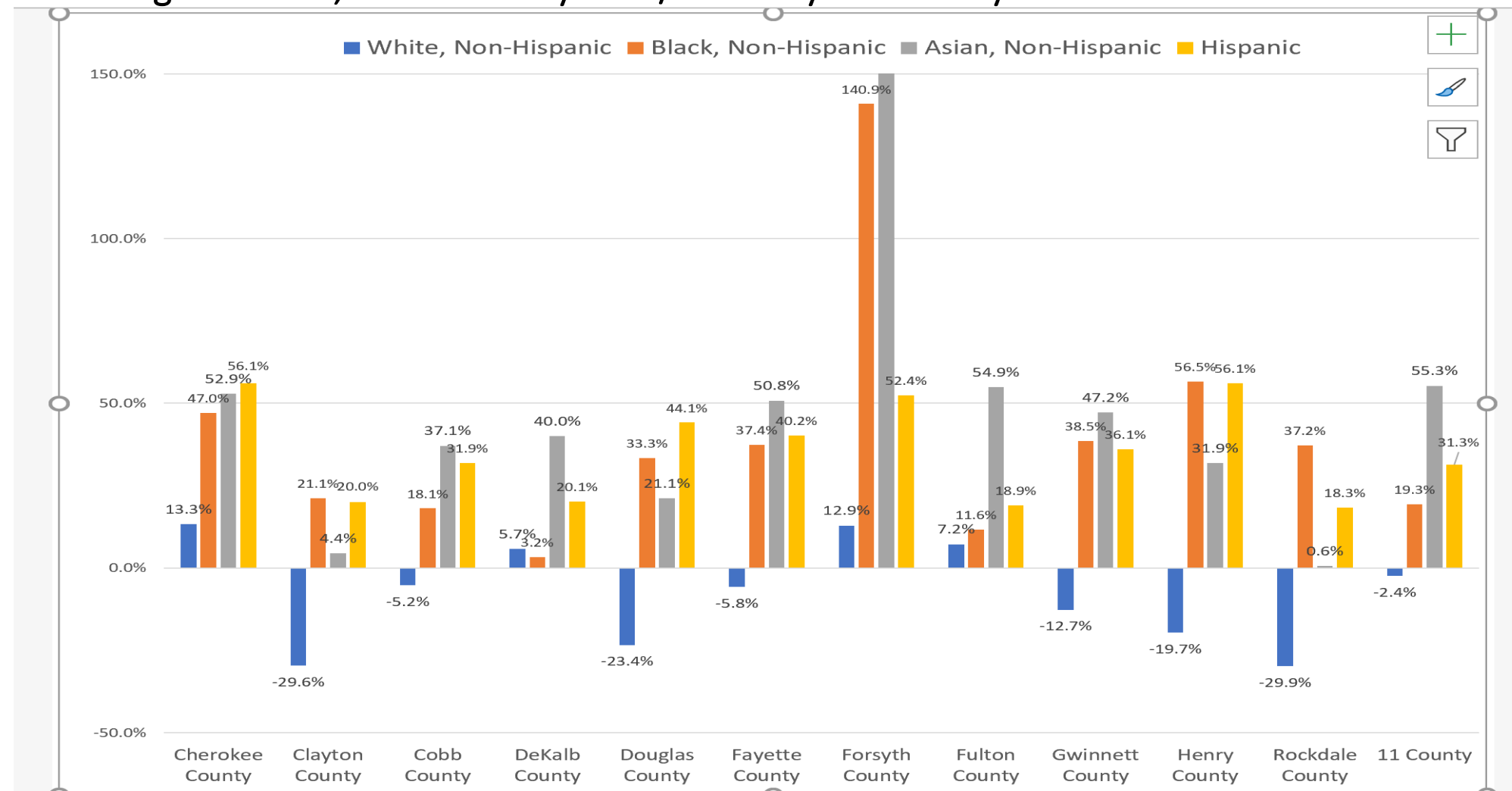
So we just saw that Hispanic/Latinx population represents healthy shares of **total** populations of counties in the Atlanta area. And yet the shares are significantly higher—in each area—when the **public school enrollment** is assessed. Hispanic/Latinx children are more than 1 in 5 of all October 2020 enrollees in Marietta and Buford City, as well as in Gwinnett, Clayton, Cobb, and Cherokee County public schools. Only Decatur and Atlanta City schools have less than 10% Hispanic/Latinx students.

## Change in Population by Race/Ethnicity Totals: 2010-20: State of Georgia and Subareas

	Total Population	Non- Hispanic	White, Non- Hispanic	Black, Non- Hispanic	Asian, Non- Hispanic	Non- Hispanic Other*	Hispanic/ Latino	Share of Net Change 10-20
State of GA	1,024,255	754,487	-64,977	356,883	158,995	303,586	269,768	26.3%
Atlanta MSA 1/	803,087	620,511	-31,655	327,066	140,394	184,706	182,576	22.7%
21 County Area 2/	817,517	626,440	-31,132	331,608	141,301	184,663	191,077	23.4%
11 County ARC 3/	684,253	528,484	-47,194	290,308	135,965	149,405	155,769	22.8%
Core 5 Counties 4/	486,601	366,784	-37,556	196,882	95,529	111,929	119,817	24.6%
State less 11 County	340,002	226,003	-17,783	66,575	23,030	154,181	113,999	33.5%
ARC Counties:								
Cherokee County	52,274	40,729	23,182	5,541	1,878	10,128	11,545	22.1%
Clayton County	38,171	31,072	-10,900	35,833	566	5,573	7,099	18.6%
Cobb County	78,071	51,161	-20,371	30,635	11,511	29,386	26,910	34.5%
DeKalb County	72,489	58,842	11,715	12,098	14,314	20,715	13,647	18.8%
Douglas County	11,834	6,924	-15,228	17,177	403	4,572	4,910	41.5%
Fayette County	12,627	9,907	-4,216	7,944	2,142	4,037	2,720	21.5%
Forsyth County	75,772	67,096	18,172	6,115	34,077	8,732	8,676	11.5%
Fulton County	146,129	132,393	27,138	46,793	28,565	29,897	13,736	9.4%
Gwinnett County	151,741	93,316	-45,138	71,523	40,573	26,358	58,425	38.5%
Henry County	36,790	30,166	-21,106	42,052	1,927	7,293	6,624	18.0%
Rockdale County	8,355	6,878	-10,442	14,597	9	2,714	1,477	17.7%
City of Atlanta	78,712	70,564	39,687	8,736	9,422	12,719	8,148	10.4%
1/ 29-County Area								
2/ARC Forecast Area, including 11 ARC Counties plus Barrow, Bartow, Carroll, Coweta,								
3/ As listed below								
4/ Clayton, Cobb, DeKalb, Fulton, Gwinnett								
Source: US Census 2020, Processed by ARC Research & Analytics/ Neighborhood Nexus								

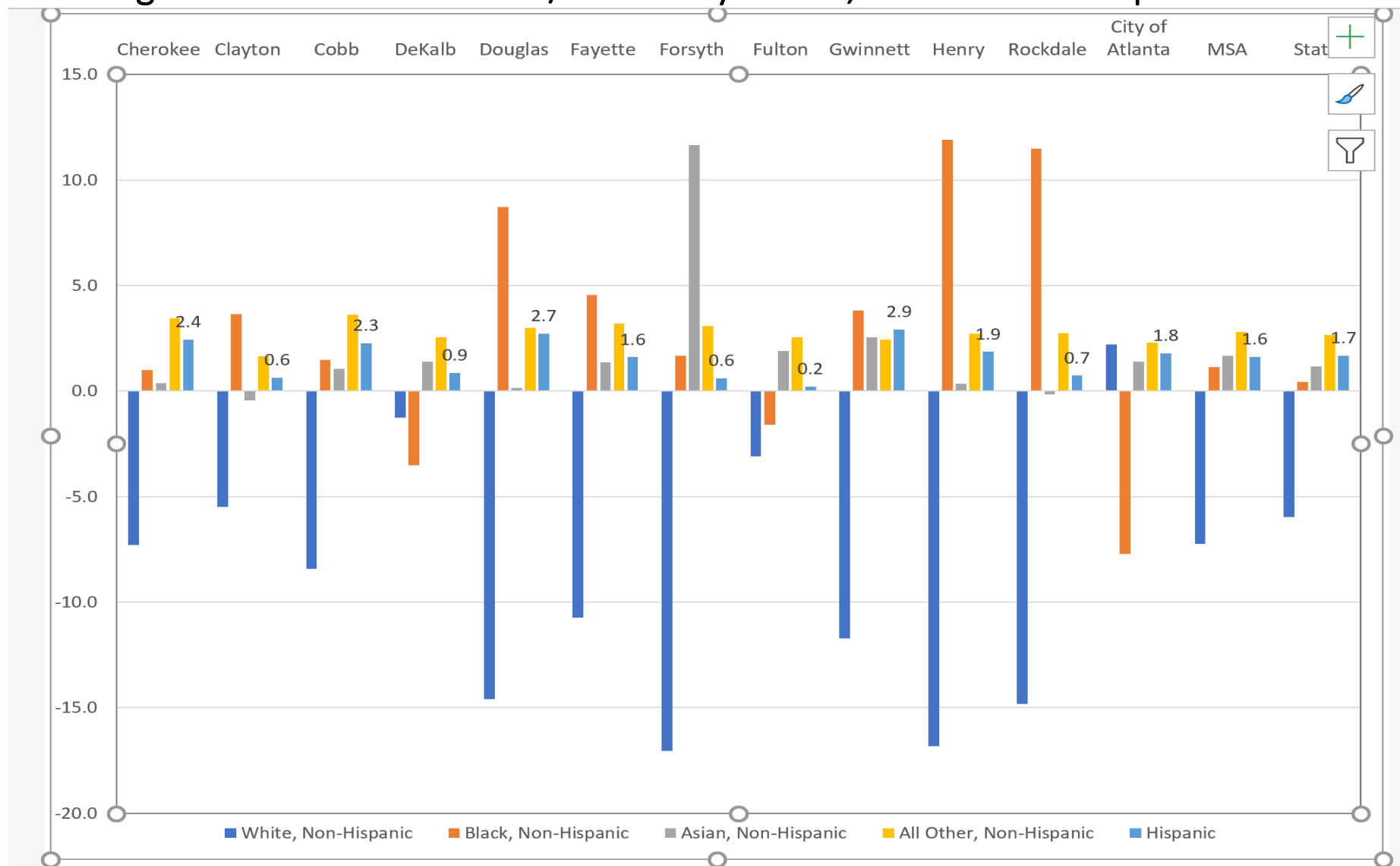
Hispanic/Latinx populations accounted for **more than 1 in 5 of net new persons in the 11-county region between 2010 and 2020**. In Gwinnett County, nearly 4 of 10 net new residents in 2010-2020 was Hispanic/Latino, and over 1 in 3 were such in Cobb County. In the state outside the Atlanta MSA, with many counties declining in size overall in 2010-20, Hispanic population was the group that provided the second largest source of population increase. Only in Fulton County as a whole, driven by low inflow of Hispanics to the City of Atlanta, were fewer than 1 in 10 of net new residents Hispanic. While only the City of Atlanta and Cherokee added white, non-Hispanic populations, every jurisdiction added Hispanic/ Latinx.

## Percentage Increase, 2010-2020 by Race/ Ethnicity: 11-County Area



As noted on the prior slide, Hispanic/ Latinx populations grew in every 11-county jurisdiction from 2010-2020, surging by more than 50 percent in Cherokee, Forsyth, and Henry Counties. These areas were (in 2010) some of the area with the lowest shares of Hispanic population overall and remain so—even with the rapid increases of the last decade—in 2020. In Cherokee County, Hispanic populations grew faster than any other race/ethnic group. In most others, percentage increases trailed those of Asian, non-Hispanic and Non-Hispanic Other (including multiracial).

# Percentage Point Increases in Race/ Ethnicity Shares, 2010-2020: Comparative Areas



Hispanic populations (light blue shading) increased their share of population in every area analyzed above, and by the most in Gwinnett County (3 percent) . But in all areas, other race/ethnic groups gained more population share than did Hispanic/ Latinx—an indication that while growth is very strong, it is beginning to slow in a relative sense over the past decade.